



DROPPED OBJECTS PREVENTION

ERGODYNE'S TOOL TETHERING SYSTEM



SECURE YOUR TOOLS WITH CONFIDENCE

The Ergodyne 3755 Self-Adhering Tape Trap is designed to help reduce the risk of dropped tools when combined with the 3700 or 3713 Tool Tail Attachments. The user can retrofit attachment points on tools, to create a secure tool connection point.



3755 Self Adhering Tape Trap 3.7m Roll

- Approved to the ANSI/ISEA 121-2018 standard
- Requires no heat source for application
- No adhesives so it can be removed with no mess
- Fibreglass reinforcement for added durability
- Provides added grip to the handle of a tool
- Maximum safe working capacity: 6.8 kg depending on length, tool, tail and lanyard used
- 3.7m length x 2.5cm width

SKU:19755



3700 Tool Lanyard Web Tool Tails 6 Pack

- Approved to the ANSI/ISEA 121-2018 standard
- Third party certified to a 0.9kg maximum working capacity with a 2:1 safety factor
- Retrofit attachment point for tool tethering
- Heavy-duty nylon webbing, high tensile strength
- Durable D-RING captive hole for attaching tool lanyards
- Multi-packs lengths: Medium: 11.5cm, Long: 14cm

VARIETY PACK SKU:19701 / 11.5cm SKU:19704 / 14cm SKU:19705



3713 Elastic Loop Tool Tails Swivel 3-Pack

- Approved to the ANSI/ISEA 121-2018 standard
- Stretch cord with tubular nylon webbing
- Retrofit attachment point for tool tethering
- Doubles as an anchor loop
- Third party certified to a 4.6kg maximum working capacity with a 2:1 safety factor
- Adjustable barrel lock for tool attachment
- Standard length: 38cm

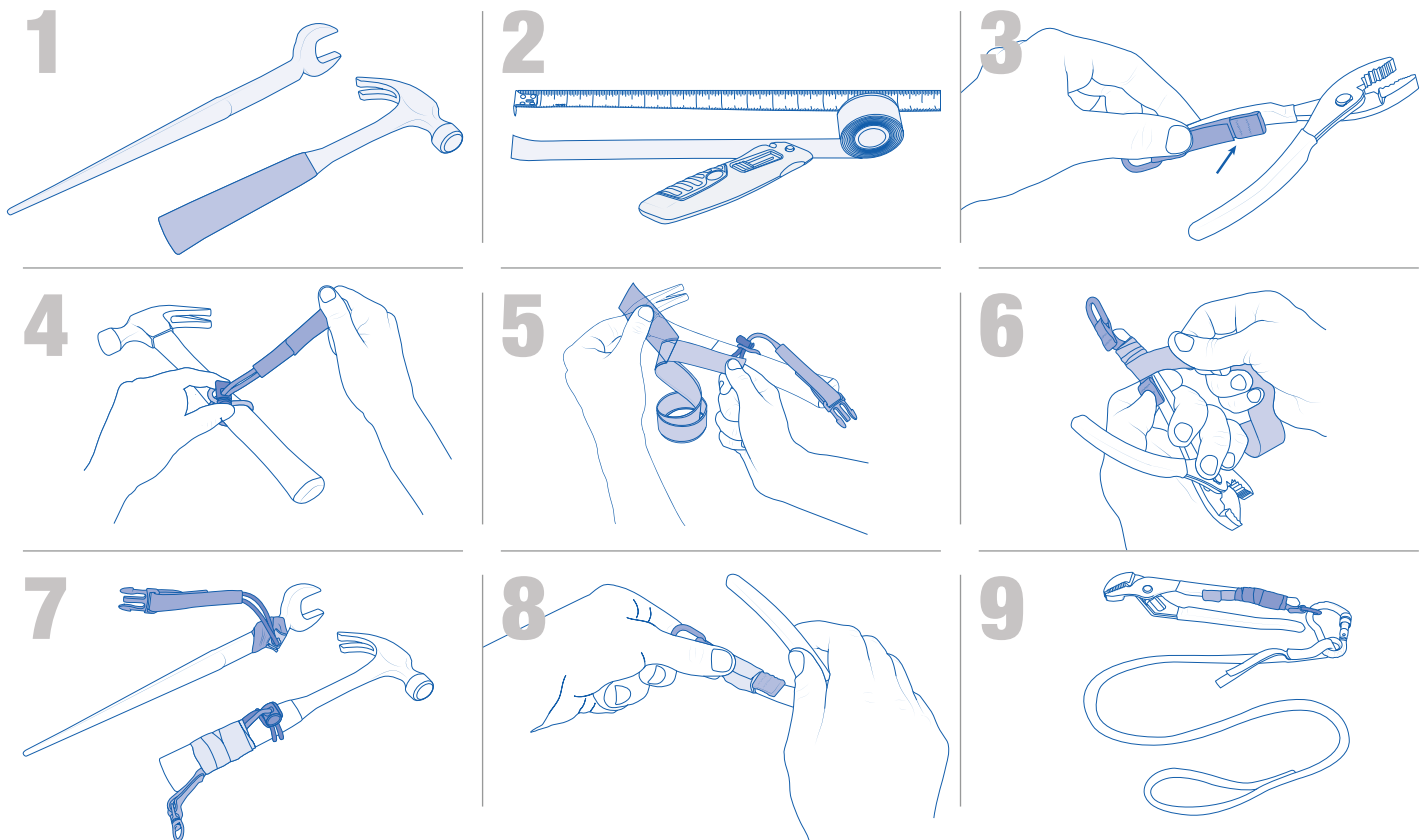
SKU:19765

FOR YOUR FREE WORKSITE TRIAL GET IN CONTACT WITH THE PRYME TEAM TODAY.



www.pryme.com.au | +61 7 3374 4544 | sales@pryme.com.au

HOW TO CREATE TOOL ATTACHMENT POINTS



1 // Measure the diameter and weight of your tool, then use the Selection Grid to determine the proper Web Tool Tail (3700 or 3713 Tool Tail) and proper length of Tape Trap to apply. / If the tool is not cylindrically shaped, measure the tool at the widest axis when determining the diameter. / If the tool is tapered, measure the area with the largest diameter you can create the attachment on.

2 // Measure and cut specified length of tape indicated on the table on the reverse side.

3 // Lay the 3700 or 3713 Tool Tail onto the tool. Ensure the Tool Tail is positioned as far up the shaft of the tool as possible without affecting its

use. A minimum 25mm away from the end of the tool is suggested. For the Web Tool Tails, ensure the web catch points are facing up.

4 // Choke the 3700 or 3713 Tool Tail onto the tool by sliding it around the tool's shaft and snug the barrel lock down tightly if applicable. If the tool is tapered, position the tail on or near the portion with the largest diameter.

5 // Remove plastic coating from tape.

6 // Wrap the tape once around itself beginning below one of the web catch points on 3700 Tool Tail or directly below the barrel lock on Elastic

3713 Tool Tail. This keeps the tape in position for continued wraps.

7 // Continue wrapping and stretching the tape firmly. Overlap previous wraps by at least half the tapes width. If the 3713 Tool Tail is used, the tape can be wrapped on top of tail or criss-crossed on either side of tail. If a mistake is made, unwrap the tape backwards and reapply. Continue wrapping tape until you reach the end. Firmly push down on the end.

8 // The tape will then begin to bond to itself.

9 // Attach a tool lanyard to complete an appropriate tethering system.

FOR YOUR FREE WORKSITE TRIAL GET IN CONTACT WITH THE PRYME TEAM TODAY.